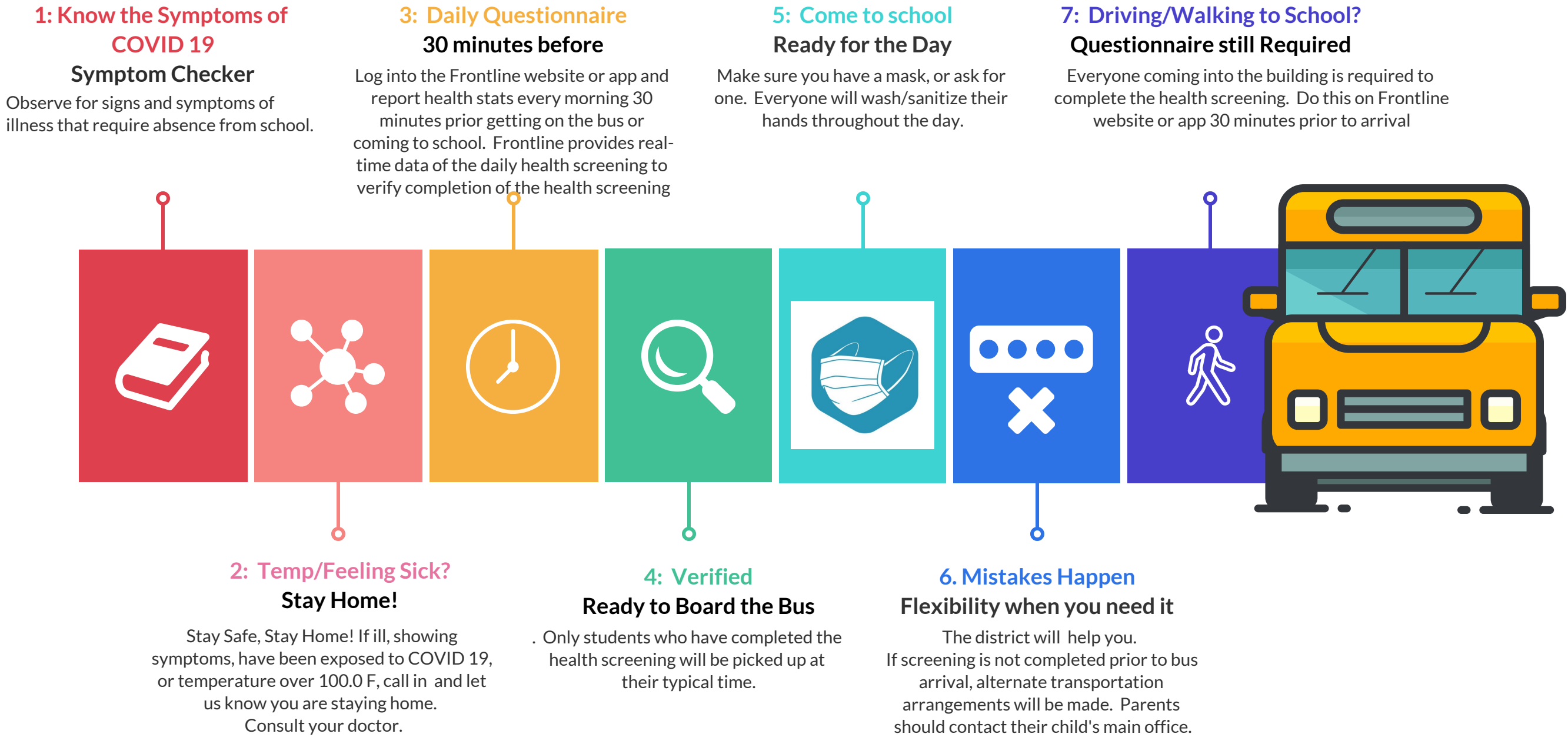


Coming to School: Everything you need to know to start your day

The health and safety of our Chautauqua Lake students and staff is our priority.
The following procedures and practices outline the daily expectations for students and staff as they prepare to come to school.



The district will ensure that all individuals, including the driver, employees, children who are able to medically tolerate a face covering, are wearing face coverings. Drivers should increase ventilation, when weather permits, within any vehicle (e.g. opening the top hatches of buses or opening windows) within the discretion of the driver or the District. Proper ventilation has shown to reduce the spread of COVID-19 per the CDC. Student attendance will be taken on every bus trip and the record will be filed with the Transportation Supervisor.



*Be Safe
Be Responsible
Be Respectful*