

# CHAUTAUQUA LAKE SECONDARY SCHOOL

## MODELS OF LEARNING

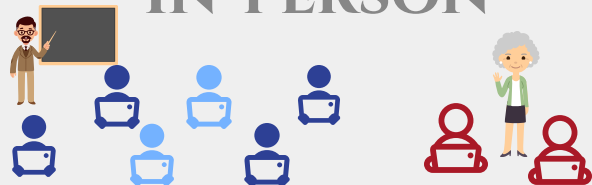
Every student will have a **Home Base Advisor** who will connect with them **everyday and take attendance**, either in person or electronically.



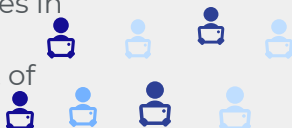
Academics, social groups, and opportunities for students to lead will continue to be part of school experience in all learning environments.



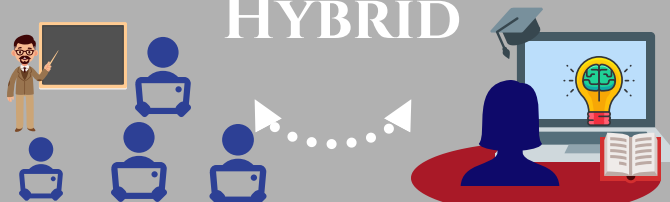
### IN-PERSON



Students attend classes in person in accordance with NYS department of health guidelines.



### HYBRID



Students assigned into two groups Navy and Maroon, keeping siblings together.



### REMOTE



Students attend all classes using Google Classroom. We stay connected using every possible resource.



Some students occasionally rotate into a live-stream class **zoom room** with staff supervision to practice using remote technology and to ensure social distancing.



A day classes and B day classes will combine into one schedule of in-person classes that are 40 minutes long, every other day.



Day One: Navy Days: Direct whole group instruction to everyone on the full class roster.



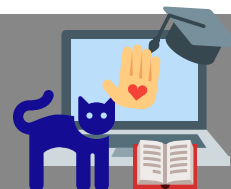
Everyday begins with **Homebase Advisory**  
A & B day normal schedule  
80 minute block periods



Students will switch every other day.  
Independent at home, or learning at school.



Day Two Maroon Days: Independent work and "office hour" for students to get help



Come dressed for Phys Ed.  
We won't be using locker rooms.

Some students may eat in a pop-up cafe or classroom instead of the cafeteria



In-person learning will be prioritized for special education students. We will still have hands on learning including Phys Ed. and Science Labs, Music and Art



We will promote opportunities to explore virtual field trips, student projects, natural resources / trails as allowable by local organizations.

