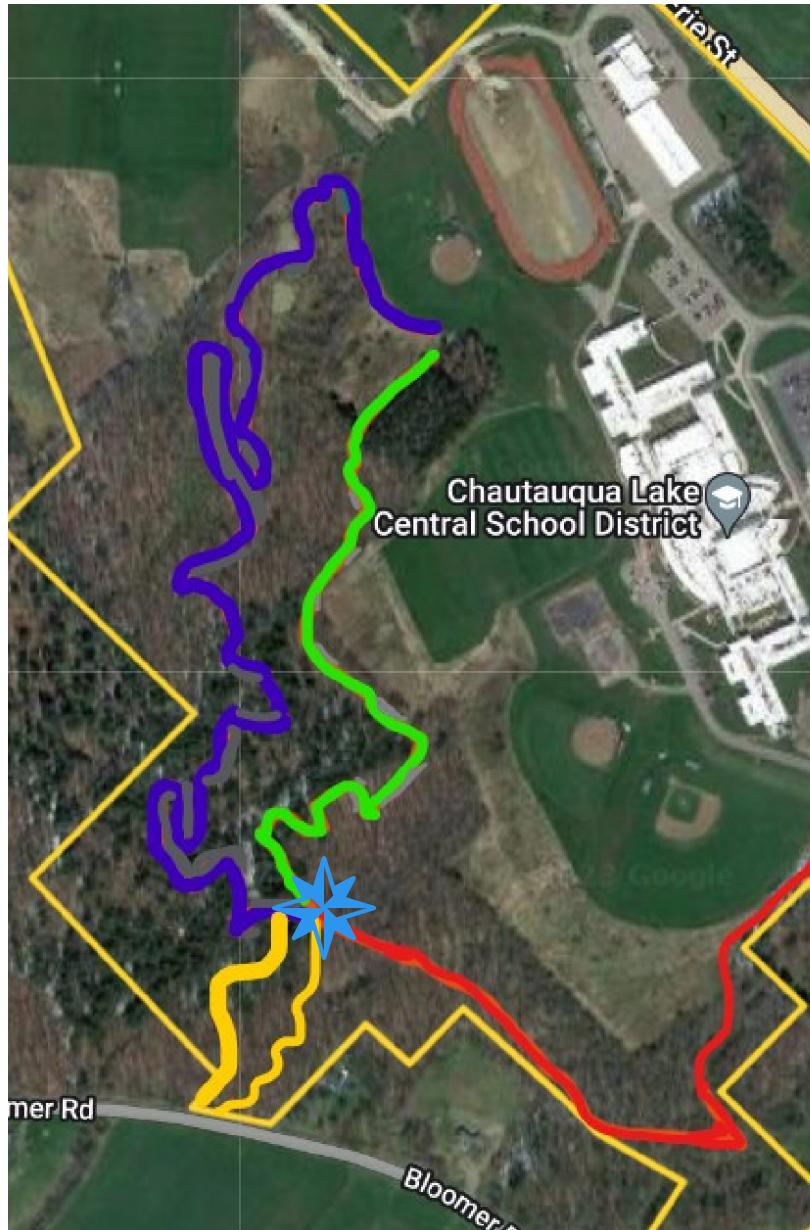


# CHAUTAUQUA LAKE CENTRAL SCHOOL ADVENTURE TRAIL SYSTEM



Four segments of this roughly 3 mile trail system converge at The Compass Hub. This trail was designed and built through a professional learning community project with Trail Construction Associates in the spring of 2023. Students from Field Science and Conservation program contributed by offering navigation gps data, preparing the trail, and finish work.

**Lake:** Blue, begins behind the modified softball field, and travels north on a grassy bank before cutting into the woods. Our longest segment, this path features descending switchbacks and rolling gradual descent to the snowmobile bridge. At the bridge, it takes a sharp left ascent to the compass hub.

**Rusty Saw:** Yellow, this trail has two options. The north side is two-way traffic and features a gradual descent to Bloomer Road. The south side is one-way only down rollers to Bloomer Road.

**Orchard:** Red, begins behind the varsity baseball field, grassy double track leading to an orchard planted by CLCS staff in September 2023. The trail cuts into the woods with a right turn and meanders along a mostly flat trail to the compass hub.

**Spruce:** Green, ascends from the compass hub with switchbacks along a ravine. This trail uses some portions of the old school trail, and runs parallel with the practice football field. It finishes with a grassy double track by the entrance to Lake.